



ACME Electronics Corporation
越峰電子材料股份有限公司

客戶

CUSTOMER

CTC

日期

DATE2022.08.12

認 可 書
SPECIFICATION FOR APPROVAL

客戶品名 CUSTOMER P/N		
越峰品名 ACME P/N	P4R12*75	
認可書編號 SPEC. NO.		

為保證訂單順利完成，請在一個月內簽回。否則，將默認貴司同意依此份認可書內容製作您所有此規格的訂單產品。

In order to ensure the leadtime for your order, pls confirm and sign this spec for ACME within one month while you received it. Or else, it means that you have approved this spec, and you have agreed with that ferrite cores from your order be produced according to this spec.

客戶認可 APPROVED BY :

如有客戶品碼（料號），請填寫在下

客戶品碼（料號）：

CUSTOMER P/N

承認書製作廠別 Factory

■廣州廠：越峰電子(廣州)有限公司 / 中國廣東省廣州增城市增江街東區府前路 1 號
No.2 Fuqian East Road, Zengjiang Street East Square, Guangzhou-Zengcheng City, 511300,
Guangdong Province, China

Tel: +86-20-3285-1888: Fax: +86-20-3285-1666

■昆山廠：越峰電子(昆山)有限公司 / 中國江蘇省昆山市黃浦江北路533號
No.533 Huangpujiang North Rd., Kunshan City, 215337, Jiang-Su Province, China
Tel: +86-512-5793-2888: Fax: +86-512-5766-4667

批准	審核	擬制
APPROVED BY	CHECKED BY	PREPARED BY
陳建志	孟偉青	董維維

AR01-60106-02



ACME Electronics Corporation
越峰電子材料股份有限公司

歷史變更記錄
REVISION RECORDS LIST

客戶 CUSTOMER: CTC	P/N	P4R12*75
	SPEC./N	

I. 更改記錄 REVISION RECORD:

版本號 REV. NO.	更改內容及原因 CONTENTS AND REASONS	日期 DATE OF APPROVAL	擔當 DRAWN
1	新制 NEW RELEASE	2022.08.12	董維維



ACME Electronics Corporation
越峰電子材料股份有限公司

規格書名稱/Specifications :P4R12*75

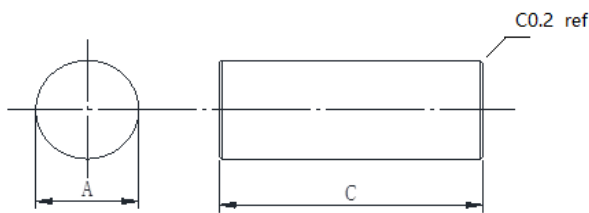
客戶料號/Customer P/N :

一、形狀、尺寸、材質/Shape, dimensions & material :

(1)形狀、尺寸：如下圖所示(單位：mm)Shape & dimensions :

(2)材質Material : P4

圖例/Drawing :



尺寸規格/Dimensions (mm) :

A :	<u>12±0.25</u>
C :	<u>75±1.0</u>

二、電磁特性規格 Electrical Characteristics :

材質 Material	初導磁率 μ_i Initial Permeability	電感 L_s (μH) (Inductance)
P4	2500±25%	7.566±10%

測試條件 Condition	10kHz,50mV
測試儀器 Equipment	卡尺(callipers)/HP4284A
室溫 Temperature	25°C±3°C;
線圈 COIL	1.2mm,10Ts (hand-made)

注意事項: Remarks

Test methods as below :





ACME Electronics Corporation

越峰電子材料股份有限公司

5/7

Sample Inspection Report

樣品檢驗報告



Part Number品名： P4R12*75

Customer客戶： CTC

Quantity數量： 10PCS

Date日期： 2022.08.12

Customer P/N客戶料號

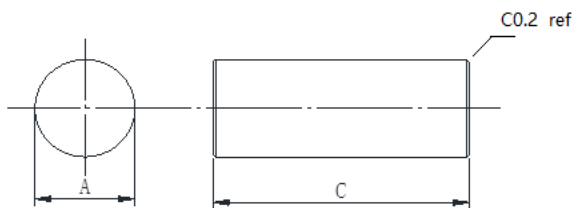
K.Y G.Z K.S (MARK)

MEASUREMENT(量測數據):

Item(項目):	A (mm)	C (mm)	Ls(μ H)						
Target 中值:	12.00	75.00	7.566						
Tolerance 公差:	± 0.25	± 1.0	$\pm 10\%$						
Upper Spec. 上限:	12.25	76.00	6.878						
Lower Spec. 下限:	11.75	74.00	8.322						
1	12.02	74.96	7.564						
2	12.02	74.94	7.574						
3	12.00	74.69	7.575						
4	12.01	74.73	7.576						
5	12.00	74.75	7.543						
6	11.97	74.85							
7	11.96	74.89							
8	11.97	74.78							
9	12.02	74.67							
10	11.99	74.70							
Min. 最小值	11.96	74.67	7.543						
Max. 最大值	12.02	74.96	7.576						
Range R差	0.06	0.29	0.033						
Average 平均值	12.00	74.80	7.566						
Judge 判定	OK	OK	OK						

TEST	Equip 儀器: 卡尺(callipers)/HP4284	Cond 條件:	Coil 線圈: 1.2mm · 10Ts
CLAUSE	PPR No 流程單:	TEMP 溫度: 25°C \pm 3°C	Series No 序號: K2207076

REMARK 備註:



Tested by 測試: 董維維

Checked by 審查: 孟偉青

Approved by 核准: 陳建志



ACME Products Appearance Specification

1. Chip, Stain:

Core size(A)	Max.size (mm ²)	Max.Q'ty (point)
	3.5	3

2. Crack:

Referred to IEC-60424

3. Crystal :

Core size(A)	Side surface	Max.Q'ty (point)
	4.5	2

4. Sticking :

- (1) Area : It is permitted up to 1/4 of surface area.
- (2) Depth: $\leq 0.2\text{mm}$.



5. Ragged edge:

- (1) Height: It is not permitted exceed the respective surface or Length: It is permitted up to 1/4 of surface perimeter.

6. Scrape:

- (1) Scrape Quantity in all orientation is not big than 6 PCS respectively.
- (2) Depth: $\leq 0.1\text{mm}$

7. Chamfer:

- (1) Due to pressing process, the step nearby the corner can be allowed showed as picture.
- (2) Due grinding process, the chamfer is not uniform and equal., even partially edge without chamfer.
- (2) Accept the core with partially grinding



Remark:

1. This Specification is based on IEC-60424 °
2. The other details that not be mentioned in this document are referred to IEC-60424 too.
3. The sampling is according to MIL-STD-105E, Inspection level II is used and the AQL=1.0.

TESTED BY: Julian

CHECKED BY:

APPROVED BY: Ivan

	Symbol	Unit	Measuring Conditions			Low Loss Material		
			Freq.	Flux den.	Temp.	P4		
Initial Permeability	μ_i		$\leq 10\text{kHz}$	0.25mT	25°C	2500 \pm 25%		
Amplitude Permeability	μ_a		25kHz	200mT	25°C	> 4500		
					100°C	> 4500		
Power Loss	Pv	KW/m ³	25kHz	200mT	25°C	105		
					100°C	55		
					100kHz	200mT	25°C	700
							100°C	450
			300kHz	100mT	25°C	660		
					100°C	430		
			500kHz	50mT	25°C	380		
					100°C	330		
Saturation Flux Density	Bms	mT	10kHz	H = 1200A/m	25°C	480		
					100°C	380		
Remanence	Brms	mT	10kHz	H = 1200A/m	25°C	135		
					100°C	75		
Coercivity	Hc	A/m	10kHz	H = 1200A/m	25°C	14		
					100°C	9		
Hysteresis Material Constant	η_B	10 ⁻⁶ /mT	10kHz	1.5-3.0mT	25°C	< 1.2		
Disaccommodation Factor	D _F	10 ⁻⁶	10kHz	< 0.25 mT	25°C	< 2		
Curie Temperature	T _c	°C				≥ 220		
Resistivity	ρ	Ωm				5.50		
Density	d	g/cm ³				4.80		

Note: Material characteristics are typical for a toroid core.
Product specification will differ from these data due to the influence of geometry and size.

